

## Westminster Abbey

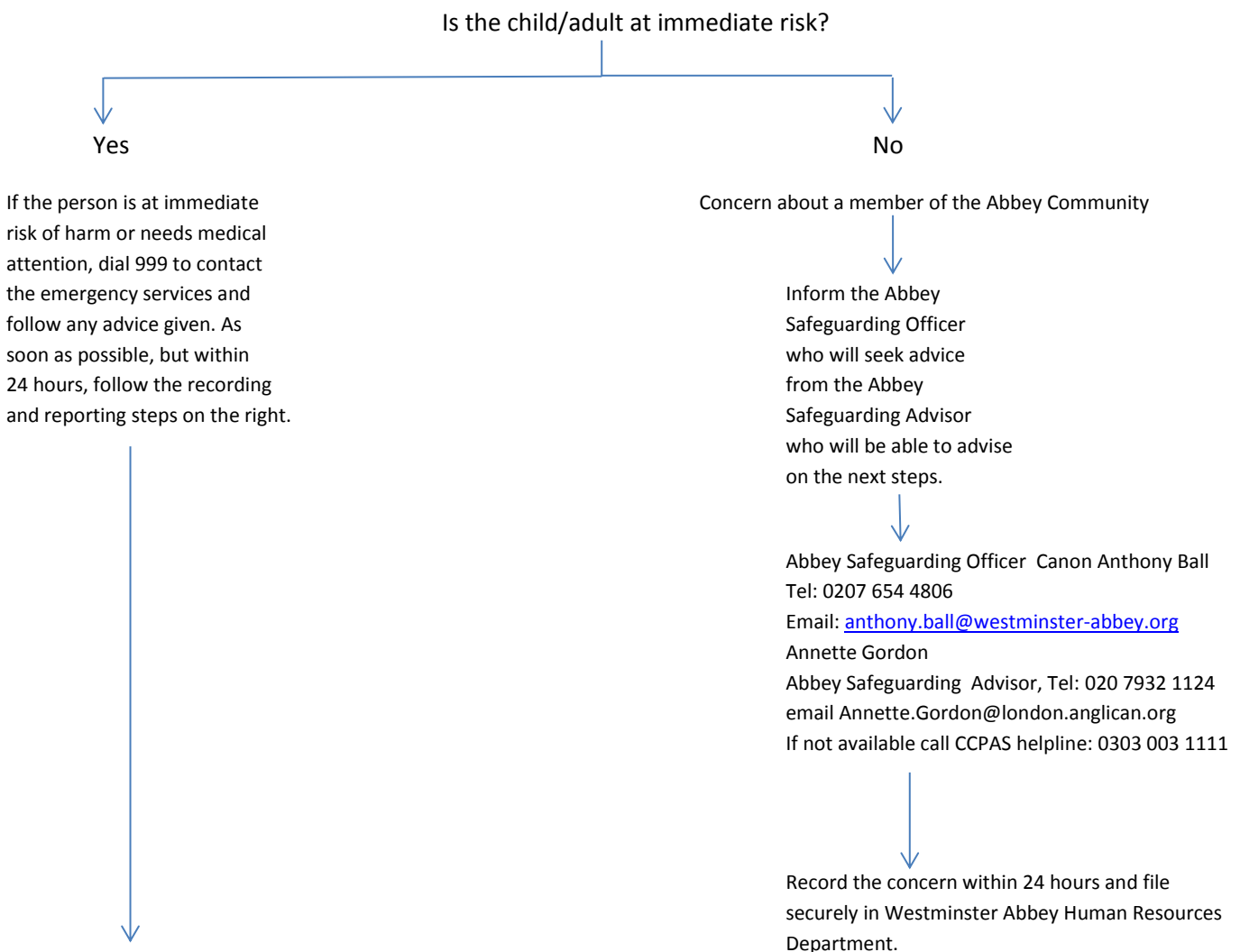
### Safeguarding procedures

Concerns about children, young people and vulnerable adults will be diligently and promptly responded to in accordance with the Dean and Chapter's procedures, recognising the sensitivity it may hold for those involved. Where there is a concern, this should be reported to the appropriate person (the Abbey Safeguarding Officer or Abbey Deputy Safeguarding Officer or the Canon Steward) or advice sought (from the CCPAS 24 hour helpline) immediately where possible, but at least within 24 hours.

The flow chart below sets out the process you should follow and from whom you can seek assistance:

#### Westminster Abbey and St Margaret's Church Flowchart: Safeguarding Concerns

(The procedures for Westminster Abbey Choir School are detailed in the Choir School Safeguarding - Policy and Procedure.)



The Dean and Chapter are ultimately responsible for ensuring excellent safeguarding practice throughout Westminster Abbey. Any concerns may be discussed with them, but advice should always be sought from the Abbey Safeguarding Officer Tel: 020 7654 4806. All concerns reported to the ASO are shared with the Canon Steward, on behalf of the Dean and Chapter; and any concerns that are brought to the attention of the Dean and Chapter are shared with the ASO.